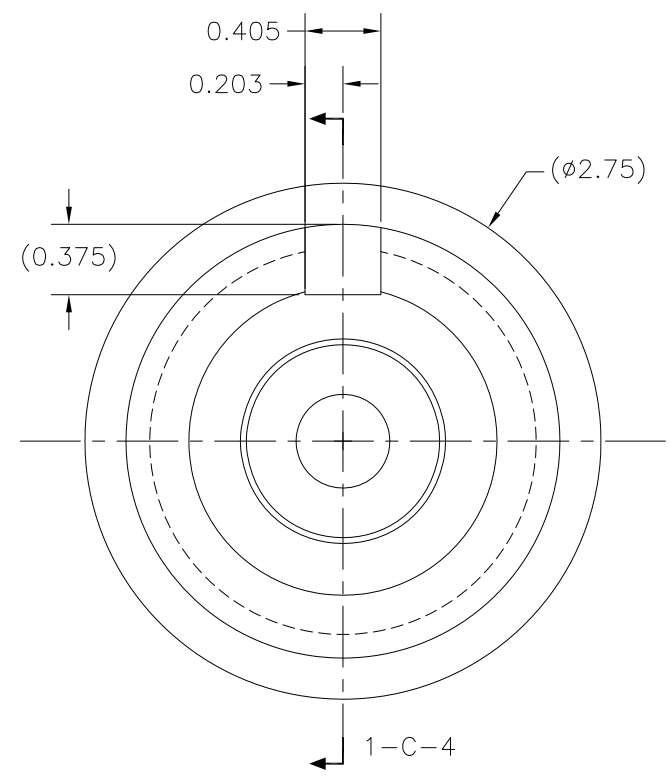


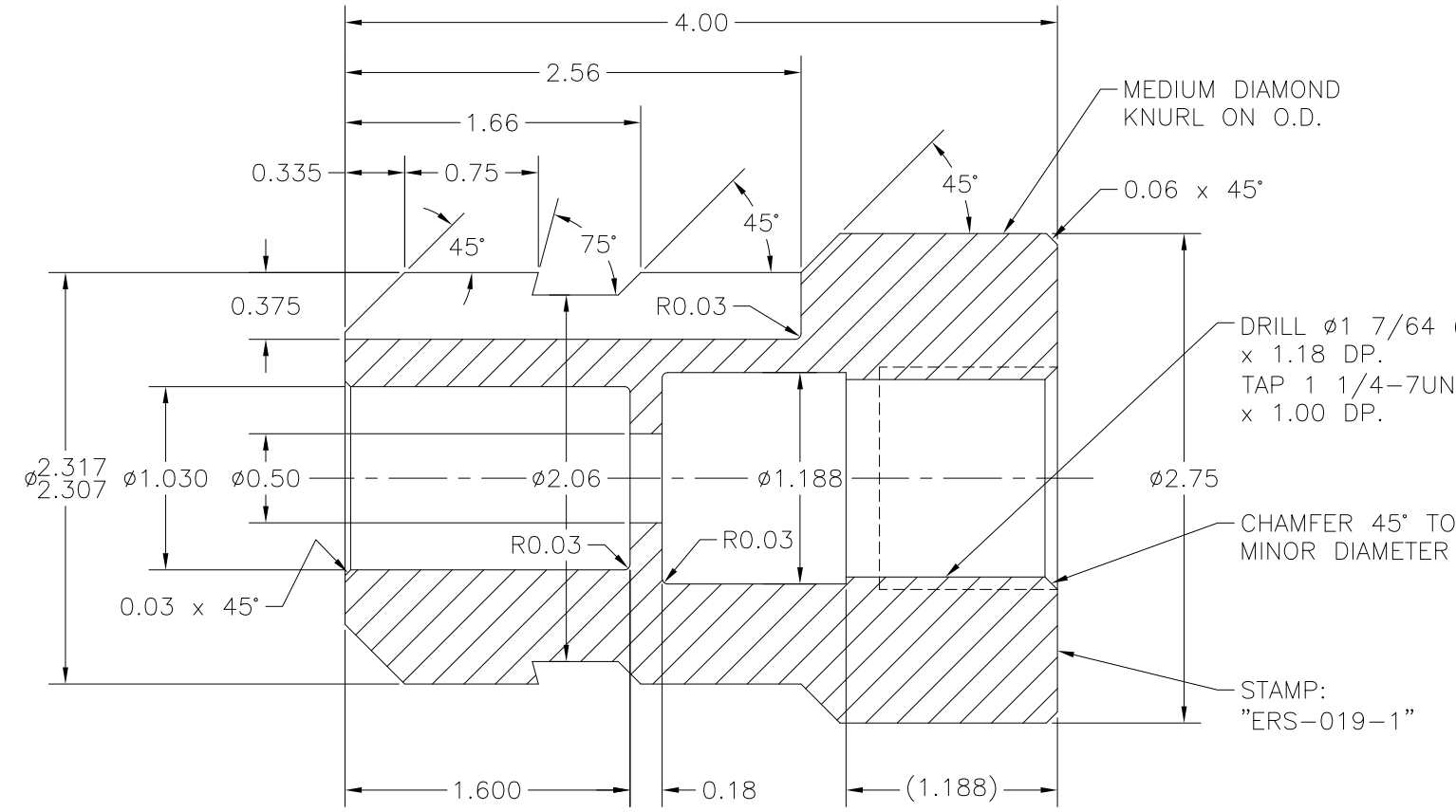
NOTES:

1. MATERIAL FOR ITEM 1: BAR, A-36 OR 4130/4140, $\phi 2.75 \times 4.00$ LG.
2. MATERIAL FOR ITEM 2: BAR, A-36 OR 4130/4140, $\phi 1.40 \times 2.00$ LG.
3. HEAT TREAT: NONE FOR A-36 OR COMMERCIAL HT. FOR 4130/4140
4. SURFACE TREATMENT: AEROCOTE OR EQ.
5. WEIGHT FOR ITEM 1: 4.01 LBS.
6. WEIGHT FOR ITEM 2: 0.66 LBS.

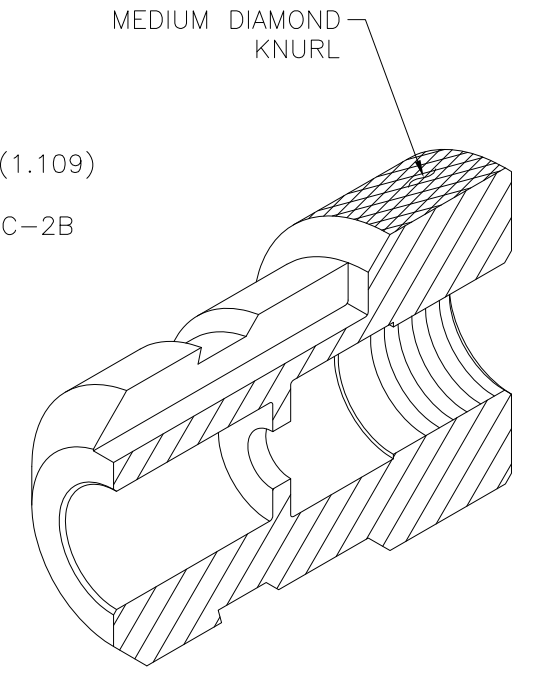
REVISIONS				
NO	DESCRIPTION	DATE	BY	APR/DATE
0	ISSUED FOR MANUFACTURE	05/12/10		



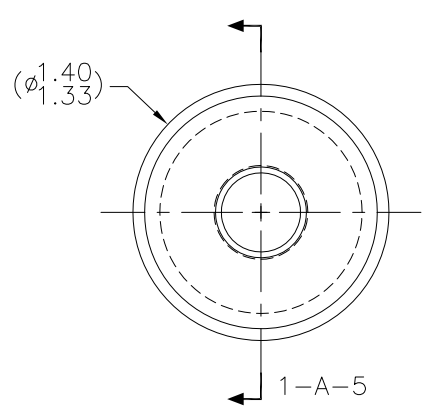
END VIEW 1-C-7
ITEM 1 - DUMMY PULLING NECK



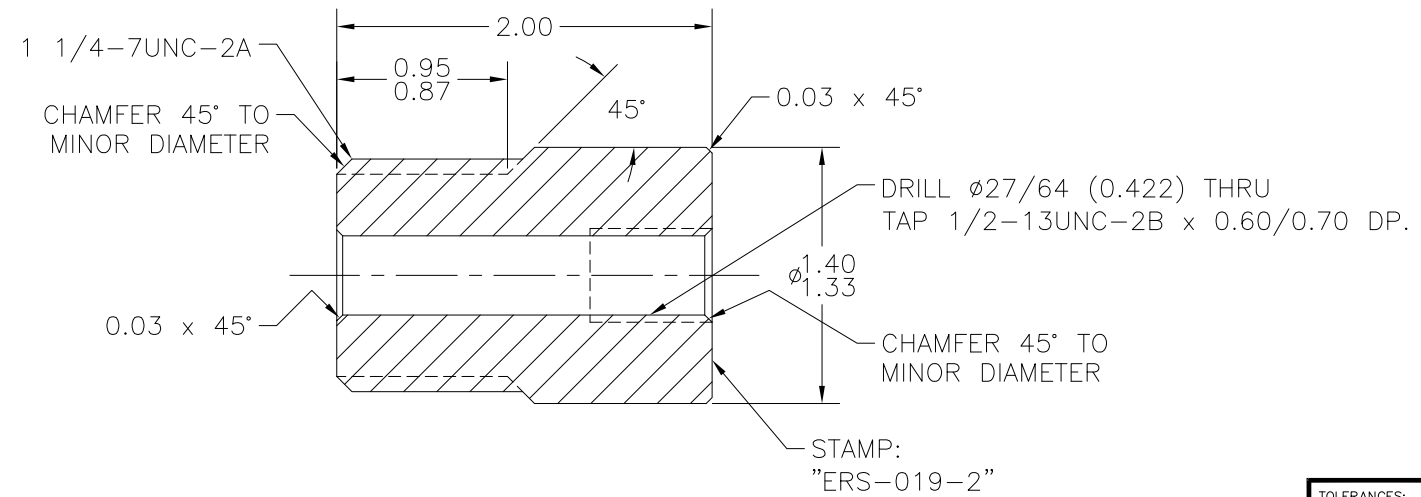
SECTION 1-C-4
REF. 1-B-7



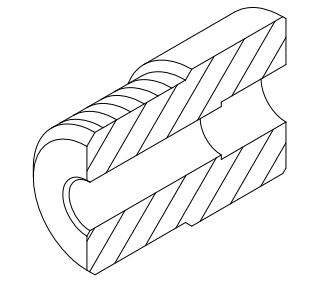
PICTORIAL 1-C-1
ITEM 1 - DUMMY PULLING NECK
N.T.S.



END VIEW 1-A-7
ITEM 2 - DUMMY PULLING NECK PLUG



SECTION 1-A-5
REF. 1-A-7



PICTORIAL 1-B-1
ITEM 2 - DUMMY PULLING NECK PLUG
N.T.S.

<p>TOLERANCES: UNLESS OTHERWISE SPECIFIED 0.X ± 0.030 0.XX ± 0.010 0.XXX ± 0.005 ANGLES ± 1/2° BREAK EDGES 0.015 x 45° MIN. FINISH 125 [Symbol] 0.010 A</p> <p>ALL DIMS ARE IN INCHES, UNLESS NOTED OTHERWISE.</p>	<p>PROPRIETARY NOTICE THIS DRAWING AND THE INFORMATION IT CONTAINS ARE CONSIDERED CONFIDENTIAL, AND MAY NOT BE REPRODUCED, COPIED OR USED, IN PART OR IN WHOLE, WITHOUT PRIOR WRITTEN CONSENT.</p>	<p>Integrated Ocean Drilling Program TEXAS A&M UNIVERSITY 1000 DISCOVERY DRIVE COLLEGE STATION, TX 77845</p>			
		<p>TITLE: DUMMY PULLING NECK & PULLING NECK PLUG</p>			
		<p>SHEET 1 OF 1</p>	<p>SCALE 1:2</p>	<p>SYSTEM ASSEMBLY</p>	<p>3" ERS</p>
		<p>BY KM</p>	<p>DATE 05/11/10</p>	<p>APPROVED TP</p>	<p>CHECKED JCS</p>